



NEW JERSEY DEPARTMENT OF CHILDREN AND FAMILIES

The Children's System of Care Developmental Disabilities Eligibility and Functional Services



www.nj.gov/dcf



@NewJerseyDCF



@NJDCF



@NewJerseyDCF



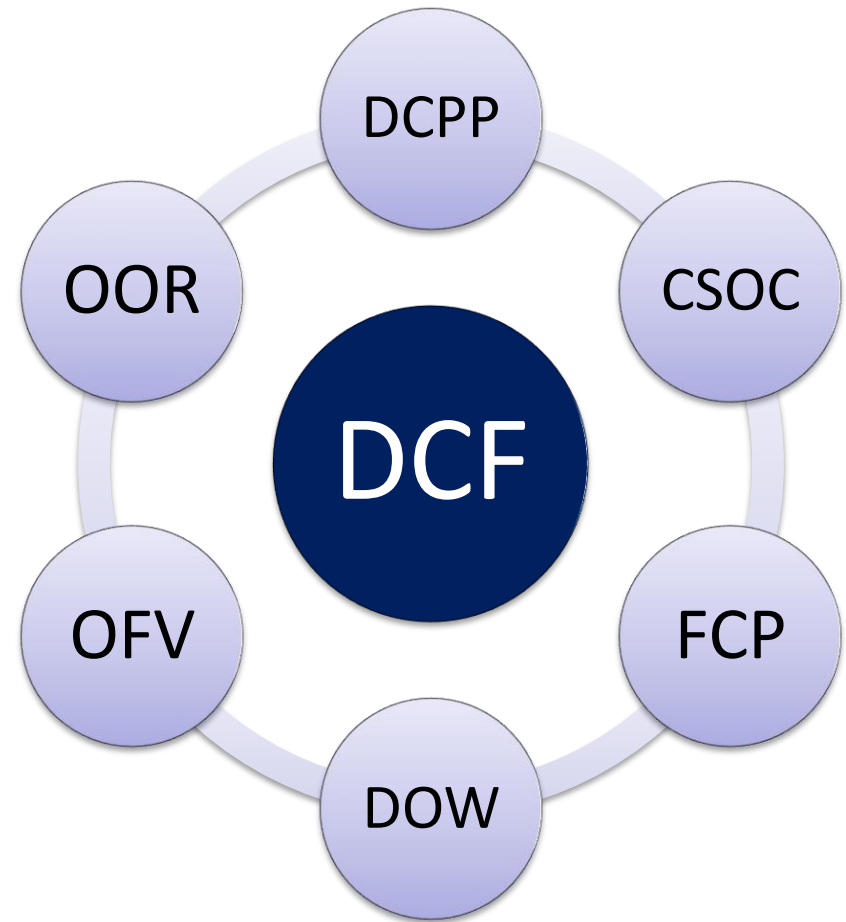
Today's Presenters

- Diana Salvador, Clinical Director, CSOC
- Yolanda Mancari, Director of Member Services, PerformCare New Jersey
- Clarence Whittaker, Assistant Director, CSOC

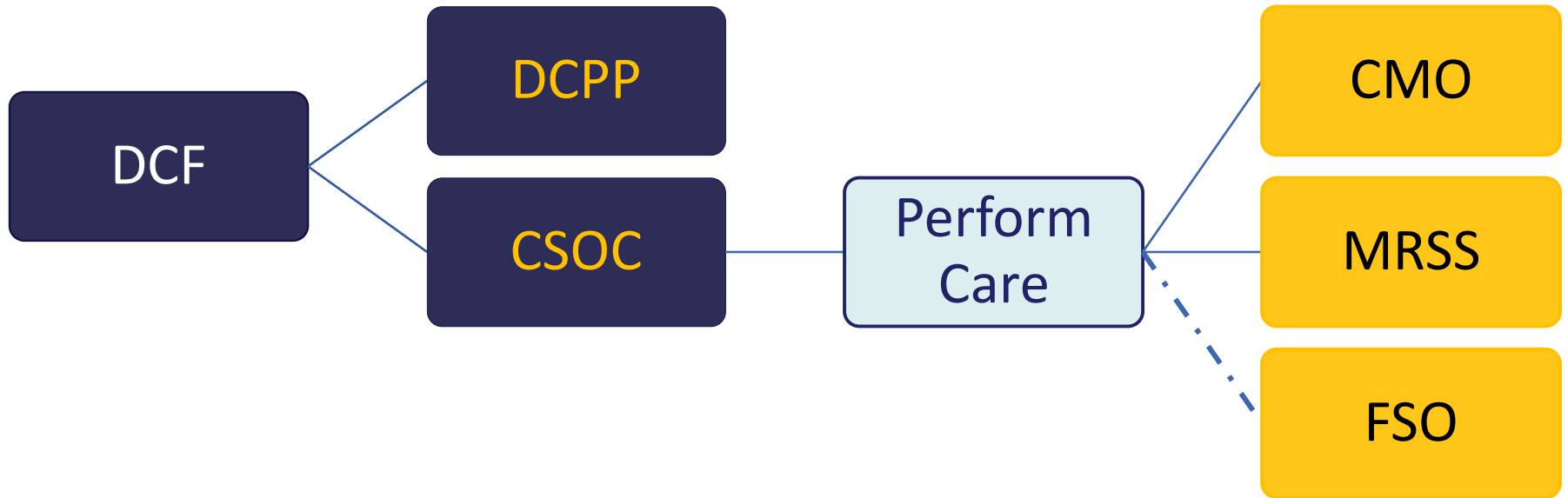


Prevention and Service Focused

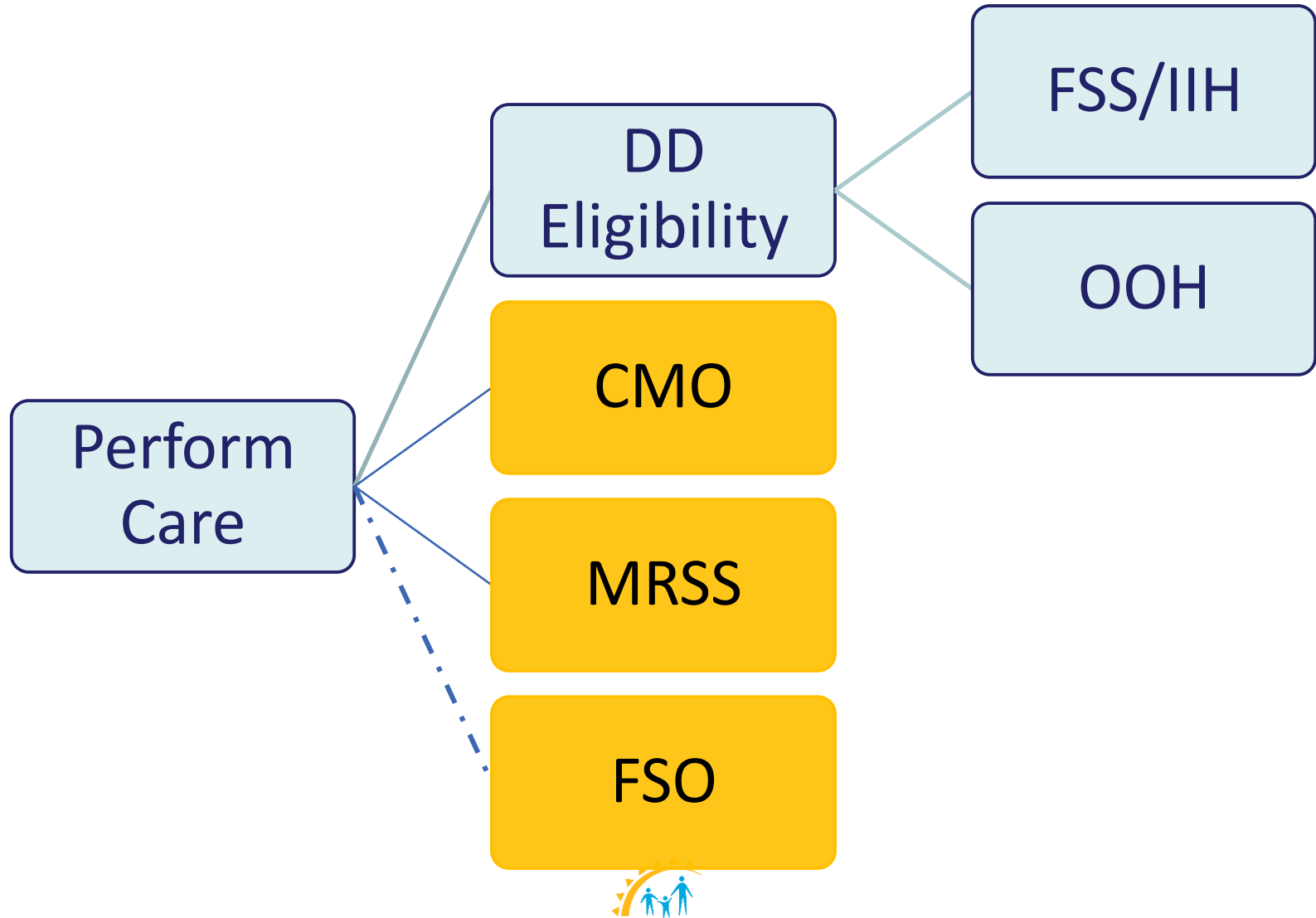
- Division of Child Protection & Permanency
- Division of the Children's System of Care
- Division of Family & Community Partnerships
- Division on Women
- Office of Family Voice
- Office of Resilience



Roles and Responsibilities



PerformCare Roles and Responsibilities



Definition of a Developmental Disability

Developmental disability means a severe, chronic disability of an individual, which:

- Is attributable to a mental or physical impairment or combination of both;
- Is manifest before age 22;
- Is likely to continue indefinitely;
- Results in substantial functional limitations in three or more areas of major life activity;
- Reflects the need for care, treatment, or other services, which are of lifelong or extended duration

Developmental disability includes, but is not limited to, intellectual disability, autism, cerebral palsy, epilepsy, spina bifida, and other neurological impairments.



Applying for DD or DDD Eligibility

For individuals **under age 18**, eligibility is determined by CSOC

- Application materials for individuals under 18 available on PerformCare's website: performcarenj.org
- **CSOC is responsible for providing services until age 21**

For individuals **age 18 and older**, eligibility is determined by DDD

- Application materials for individuals 18 and older available on DDD website: state.nj.us/humanservices/ddd/home/
- **DDD is responsible for providing services after age 21**



Requirements for DD Eligibility

- Ages
- Diagnosis
- Functional Limitations
- Citizenship
- Residency



Age Requirements

- Applications accepted age 0 until the day before a child's 18th birthday.
- On the 18th birthday and thereafter, applications must be submitted to the Division of Developmental Disability.
- Youth between the ages of 18 and 21 may be found eligible by Division of Developmental Disability; but will receive services through Children's System of Care until their 21st birthday.



Diagnostic Requirements

- A child must be diagnosed with a **developmental disability** in order to be considered for eligibility.
- Common developmental disabilities include intellectual disability, Down's syndrome, and autism spectrum disorder. Attention deficit hyperactivity disorder and other behaviorally related conditions are not developmental disabilities.
- A diagnosis must be made by a licensed clinician through some evaluation process. Diagnoses from a school representative, unless a state licensed clinician, is not acceptable, nor is a prescription pad diagnosis from a pediatrician.



Functional Limitations

In order to be eligible for services through Children's System of Care a child must have substantial functional limitation in three of seven areas. A diagnosis of developmental disability is not enough to warrant eligibility.

- Receptive and expressive language function
- Self-care
- Learning
- Self-direction
- Capacity for independent living
- Economic self-sufficiency
- Mobility

Measures of functional ability include standardized measures of adaptive function such as the Vineland Adaptive Behavior Scales or the Applied Behavior Assessment System.



Citizenship and Residency

- The child and/or parent/legal guardian must be a United States citizen or permanent resident with a U.S. Birth Certificate, U.S. passport, Certificate of Naturalization, Certificate of Citizenship, or Permanent Resident Card (Green Card).
- The child and/or parent/legal guardian must be a resident of New Jersey.



Steps to Eligibility

Completing the Application

- Complete application online through PerformCare portal, uploading all documentation
- Complete application through portal and provide supporting evidence through the mail
- Request paper application from PerformCare or download it from the PerformCare website and submit completed application and supporting documentation through the mail



Steps to Eligibility

Application Review

- Upon submission, PerformCare checks the application for completeness
- Families will be advised if additional information is needed
- Incomplete applications may take longer to process



Eligibility Denials

Options Following a “Not Eligible” Determination

- File an appeal of the determination either with or without additional supporting documentation
- Reapply if circumstances change



DD Eligibility Process

Intellectual and Development Disability Services - video

<https://www.performcaresnj.org/video/idd-services-720.mp4>



The Service Array – DD Eligible Youth

Can include any CSOC service:

- Care Management Organization
- Mobile Response Stabilization Services
- Family Support Organization

As well as Functional Services:

- Family Support Services
- Intensive In-Home Services



Family Support Services

Designed to strengthen and promote families that provide care at home for a child or young adult.

Eligibility for Family Support Services

- Child must be determined eligible for Intellectual/Developmental Disability services through the New Jersey Children's System of Care.
- Child must live in the community either with a family member or a Resource Family.

How to apply for and request Family Support Services

- Call PerformCare toll free at **1-877-652-7624** to complete an application by phone.
- PerformCare evaluates for FSS based on individual need, caregiver need, current services utilized/available, and the availability of resources.



Family Support Services

- Educational Advocacy
- Camp
- Assistive Technology
 - **Assistive Devices:** Examples include travel chairs, walkers, and positioning systems.
 - **Vehicle Modifications:** Examples include motorized lifts and ramps.
 - **Environmental Modifications:** Examples include widening of doorways, ramps and/or grab-bars, and their installation.



Family Support Services

- Respite Care
 - Agency Hired Respite
 - Self-Hired Respite
 - Agency After School Care
 - Agency Weekend Recreation
 - Overnight Respite



Intensive In-Home Services

- Behavioral Services (ABA)
- Clinical and Therapeutic Services
- Individual Support Services



Short Term Out-of-Home Treatment: Crisis Stabilization and Assessment Programs

Program objectives:

- Engage and stabilize youth
- Provide comprehensive diagnostic assessments that identify:
 - Appropriate treatment setting (in-home/out-of-home),
 - Needed services
 - Supports that can meet the youth's habilitation and behavioral health needs upon discharge
- Skill building, assistance with Activities of Daily Living and engagement with family are included
- When clinically appropriate, IHH will be initiated in the program and the IHH therapist will continue to provide services to the youth and family in their home upon discharge.



Out of Home Treatment Programs

- The Children's System of Care strives to maintain youth in the community for treatment, whenever possible.
- However, some children with developmental disabilities who have needs that can not be met at home may be eligible for treatment in a residential program.
- This recommendation will be made by the youth's **Child Family Team.**



Transitioning Young Adults to the Division of Developmental Disabilities (DDD)

- DDD performs eligibility determination for young adults who will require services past their 21st birthday. Families are strongly encouraged to ensure that the DDD eligibility process is completed prior to the young adult's 20th birthday.
- The youth is required to have the appropriate type of Medicaid to qualify for DDD services. For more information, visit DDD's website:
nj.gov/humanservices/ddd/services/apply/index.html
- Collaboration between CSOC and DDD includes roundtable conferencing and data sharing.



For more information...

Children's System of Care:

www.state.nj.us/dcf/families/csc/

PerformCare Member Services:

877-652-7624

www.performcarenj.org



Thank you!



Questions?

